

EZ-SCAF

Safety - Integrity - Efficiency



CAPABILITY STATEMENT

2023

SCAFFOLDING | LABOUR | MACHINE HIRE | CAREERS

ezscaf.com.au

OVERVIEW

EZ-SCAF Pty Ltd is a local, family owned Karratha based scaffolding company providing high-quality access solutions to all of Western Australia.

Our commitment to excellence has positioned us as a leader in the scaffolding industry, delivering unparalleled scaffolding solutions for our clients.

We prioritise quality product, service and outcomes, working closely with our clients to optimise structural performance and deliver results that exceed expectations.

Our industry-leading experience offers seamless communication, budgeting and on-site productivity while prioritising safety and high-quality results. Leveraging our partnerships with the top companies in the Australian scaffolding industry, we make your scaffolding job EZ.



SCAFFOLDING

Our designs are engineered to address the unique conditions of your construction site, as well as the size and scale of the project while meeting government specifications.

We scope, liaise and erect the job, conducting monthly testing, maintenance and variation for compliance and quality.



LABOUR

Are you in need of skilled construction personnel for your next scheduled shutdown?

Look no further than EZ-SCAF. Our roster of experienced supervisors, scaffolders, riggers and TA's are available for day or extended workforce appointments and are the best in the business.

Trust us to provide the expertise you need to get the job done right.



MACHINE HIRE

We offer a wide range of machinery to make your construction project run smoothly, including scissor lifts for height access and EWP boom lifts for work platforms.

All of our machines are site-ready, fully mine spec, come with all required 90-day and yearly inspections, and are available for dry hire.



CAREERS

EZ-SCAF is hiring! We are currently seeking skilled and motivated individuals to fill various positions including scaffolders, riggers and trade assistants.

Join our team and enjoy competitive wages, a supportive work environment and opportunities for growth and development.

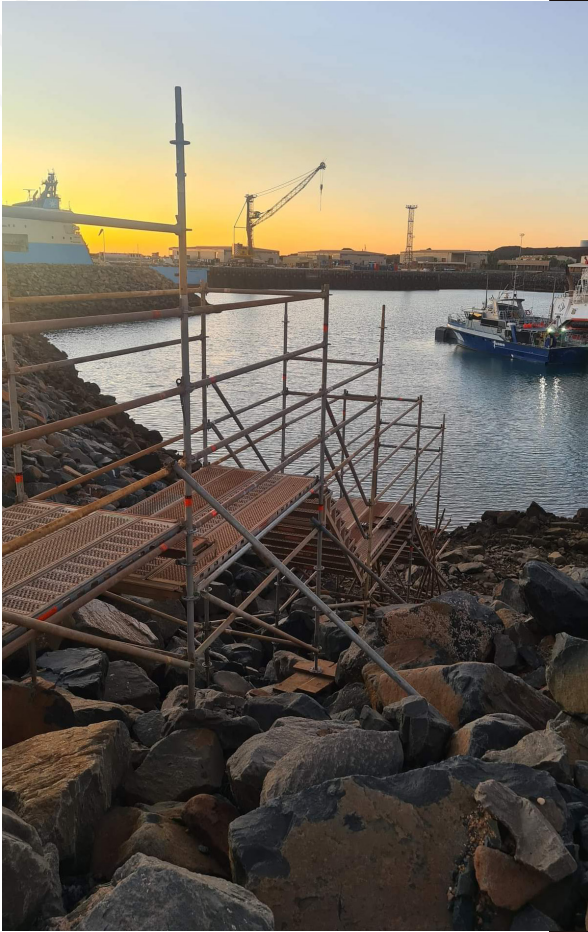
Apply now to start your career with us.

INDUSTRIES WE SERVE

We proudly serve diverse business sectors in the Pilbara, Kimberly's, and Goldfields of Western Australia, with a commitment to delivering tailored scaffolding solutions to even the most remote locations.

Here are just some of the industries we serve:

- Mining
- Oil and Gas
- Commercial Real Estate
- Civil Construction
- Marine and Offshore
- Local, State and Federal Government
- Rail



CAPABILITIES

Our scaffolding company provides tailor-made solutions designed to meet the specific needs of construction sites across Western Australia.

From design and engineering to transportation, delivery and installation, we offer a full range of scaffolding services for any size and scale of project.

We also maintain and test our equipment every month to ensure safety and compliance.

- Design and Engineering
- Scaffolding
- Labour
- Transportation and Delivery
- Machine Hire
- Temporary Fencing Hire

We recognised that there was a gap in Western Australia for custom scaffolding solutions.

We decided to fill this void and have since become the leading scaffolding company in Pilbara, serving all of WA.

OUR CUSTOMERS

Our customers keep returning because we provide them with tailored scaffolding solutions that meet their unique needs.

We prioritise safety, efficiency and timely delivery, ensuring their satisfaction and success in every project.





EZ-SCAF is a trusted leader in the scaffolding industry, providing unparalleled scaffold solutions across Western Australia.

Our commitment to quality and safety ensures we exceed client expectations every time.

CONTACT US

Contact us today to discuss a custom scaffolding solution for your next project.

ACCREDITATIONS



COMPANY DETAILS

📍 1963 Anderson Road
Karratha Industrial Estate,
WA 6714

☎ +61 0474 548 044

✉ quote@ezscaf.com.au

🌐 ezscaf.com.au

ABN 94 639 163 536